



# HUFCOR **FLEXTACT**<sup>®</sup>

**TACTICAL TRAINING  
MOVEABLE WALL SYSTEMS**

## **SAFETY AND USE GUIDE**

Copyright 2010 © HUFCOR, Inc.  
All rights reserved.

## **Notice to Users**

This book is intended exclusively for military, law enforcement and licensed security personnel. All training should be conducted under the supervision of a qualified instructor. HUF COR, Inc., its subsidiaries and affiliated representatives assume no responsibility for book content used incorrectly or by improperly trained personnel.

All tactical training has risks, regardless of the designed safety of the equipment. Failure to follow safety guidelines can cause injury or death.

Hufcor, Inc. reserves the right to modify or change our safety instructions and update this manual at any time. The most current version of the FlexTact® Safety & Use Guide update version is available to download at our website at [www.hufcortacticaltraining.com](http://www.hufcortacticaltraining.com).

Copyright 2010 © HUF COR, Inc.

*All rights reserved. No part of this book may be reproduced or transmitted in any form, or by any information and retrieval system, without written permission from HUF COR, Inc.*

## **Disclaimer of Liability**

Due to hazards and dangers associated with all tactical training, the user of the HUFCOR FlexTact® tactical training moveable wall systems assumes all responsibility and risk for the use of the said product. HUFCOR disclaims all warranties, representations or guaranties, expressed or implied, other than manufacturer warranties for designed intended performance. HUFCOR does not assume any liability or responsibility for the use of these products. Under no circumstances shall HUFCOR, its employees or agents be held liable for any direct, indirect, accidental or intentional damages, injury or death, whatsoever, resulting from the use of the HUFCOR product.

# Table of Contents

Introduction	7
Safety Hazards	8
Personal Protective Equipment	9
“No Shoot” Areas	12
Muzzle Discipline	13
Conditions of Weapons Carry	14
Go Dry First	15
Qualified Range Safety Officer	16
Denial Barriers	18
Target Placement	19
Training Weapons	20
Ammunition Concerns	21
Diversion Devices,	22
Chemical Munitions, Smoke	
Flangible Windows	
Catwalk/Observation Safety	23
Other Training Concerns	24
“No Shoot” Rules	27
Terms & Definitions	28
Summary (Do’s/Don’ts)	30

# Introduction

The HUF COR FlexTact® System is designed to provide scenarios of multiple building floor plan layouts in a single facility. The system uses specially designed operable wall panels hung from an overhead aluminum tracking system.

HUF COR's FlexTact design maximizes the flexibility of the training center by using time-tested overhead partition track and trolley systems to move the panels into place. The system allows room changes to be completed in minutes. Unlike fixed wall training centers, HUF COR's moveable wall centers provide unlimited floor to ceiling room configurations increasing the trainers' effectiveness to teach SWAT and MOUT entries, first responder, active shooter and defensive tactics exercises.

The FlexTact System is designed for force-on-force training for situational training scenarios. In addition, the configured rooms/buildings allows for tactical training encompassing various targets that can be incorporated and engaged **with non-lethal training cartridges only.**

**WARNING:** All firearms training can be hazardous, only non-lethal training cartridges should be used. The HUF COR FlexTact System is not manufactured with ballistic material therefore **lethal or reduced-lethal ammunition should NEVER be utilized or allowed within the premises of a HUF COR FlexTact system.**

The use of all non-lethal ammunition (see section on non-lethal cartridges) should be done with strict adherence to all cartridge manufacturers' guidelines. Failure to follow those guidelines can result in injury or death.

# Safety Hazards

Tactical training, even with non-lethal training ammunition, can present certain safety hazards.

The most common concern is the break-up or fragmentation of paint marking cartridges and the potential for these and other non-lethal projectiles to ricochet and strike the shooter/trainee unintentionally.

All projectiles can bounce and fragment: The proper use of recommended personal protective equipment can prevent an injury.

Stand-off distances should always be followed pursuant to recommendations made by the manufacturers of the non-lethal ammunition in use.

Force-on-Force training is made safe with the proper donning of all recommended personal protective equipment (see section on Personal Protective Equipment.)

# Personal Protective Equipment

All personnel training or observing training in or near the HUF COR FlexTact structure should wear and utilize appropriate protective equipment.

The following guidelines govern the required and recommended personal protective equipment.

## **Dry Run/Rehearsal Training**

Hufcor recommends the use of eye protection when training within a FlexTact facility even during dry runs or rehearsal sessions while learning proper entry techniques, muzzle positioning and defensive tactics.

**Eye Protection** – Proper eye protection is a safety precaution in any shooting activity. Everyone present (trainers, spectators and instructors) must wear appropriate eye protection while in the training area.

Danger can come from fellow trainers and trainees, direct ballistic impacts, ricochet, ejected casings, potential splatter, lubricants, gases and other by-products of a fired non-lethal cartridge or projectile.

Good eye protection must be shatterproof and be worn flush to the face and of a “wrap-around” style. Glasses without side protection do not provide appropriate protection and are not recommended.

## **Force-On-Force**

**Eye-Protection** (see previous page.)

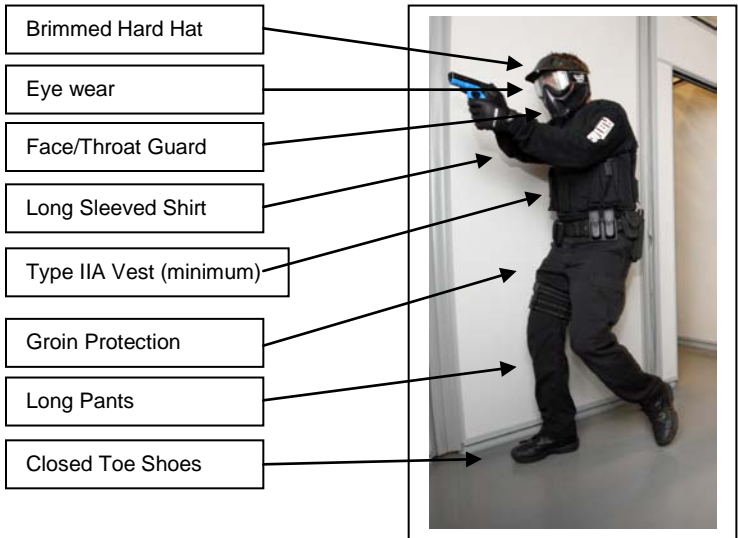
**Ear Protection** – Exposure to gunfire, even from non-lethal rounds and blanks may cause permanent loss of hearing. Commercially available ear muffs or ear plugs can reduce the loud report of fired shots.

**Face/Throat/Groin Protection** – During training in Force-on-Force scenarios, where impact from non-lethal projectiles (paint marking cartridges and plastic BBs) is likely to occur, the areas of the face, throat and groin must be protected. Acceptable safety gear is commercially available that is designed specifically for this type of training.

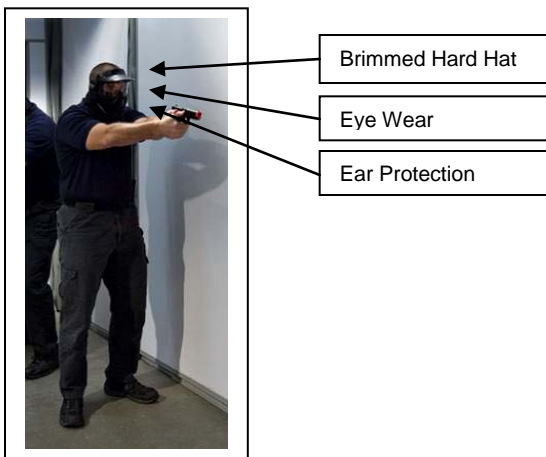
**Chest/Torso Protection** – During Force-on-Force scenarios, users of the Hufcor FlexTact systems are required to use a protective bullet resistant vest with a minimum Type IIA U.S. National Institute of Justice, HOSDB or similar local governmental rating.

**WARNING:** Failure to utilize personal protective equipment can cause serious injury. All non-lethal ammunition manufacturers' recommendations regarding personal protective equipment should be followed.

**Required Safety Equipment for Force-On-Force Training** – Eye protection, ear protection, face/throat/groin protection, long sleeve shirt, long pants, hat with brim (to deflect casings), closed toe shoes and protective vest.



**Required Safety for Non-Force on Force Training** – Eye protection, ear protection, hat with brim.



# No Shoot Areas

Areas where shooting or pointing of the firearm is prohibited are known as “No Shoot Areas.” These areas are usually places that have increased potential for the non-lethal projectile to leave the structure with the possibility of striking someone outside of the training area.

These restricted areas are, but not limited to:

- Near the top of a wall (where a projectile could go over)
- Behind doors (where a projectile can exit the space between the door jam and door)
- Near open windows (where a projectile could exit the window)
- Any other areas that should be excluded from projectile contact.

Targets are not permitted in “No Shoot Areas.” It is recommended that all “No Shoot Areas” be marked with bright red identification. Examples include the backside of a door and door jam; around a window frame and a red line placed around the top of all walls in open roofed areas or where catwalks are utilized.

Hufcor provides a “NO SHOOT” removable wall graphic for temporary use after the FlexTact system has been configured for a specific training exercise.



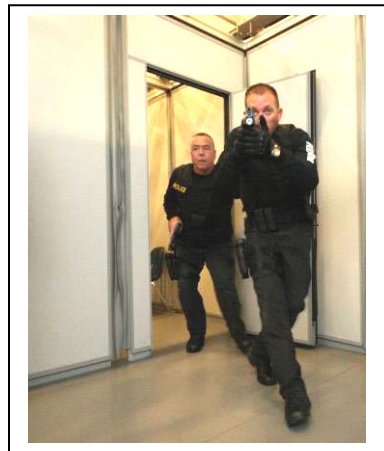
# Muzzle Discipline

Users must always be conscious of where their muzzle is pointing. During training, a muzzle should never be pointed at another person, unless in Force-on-Force Training exercises where all participants are wearing the required *Personal Protective Equipment*. Nor should a muzzle be pointed in the direction of any “No Shoot Areas.”

Muzzle sweeping of a fellow team member most commonly occurs as students cross the threshold while making entry into a room. Extra care should be taken during room entry. Muzzles should be staged at low ready (pointing down at 45 degrees.) High ready (port arms) should not be used in the FlexTact structure.

The rear officer in this photo at right demonstrates the recommended “low ready” position as trainees enter a room.

*(This demonstration was conducted during a dry, empty weapons rehearsal during a non-Force-on-Force entry exercise.)*



# Conditions of Weapons Carry

It is highly recommended that participants always carry their firearms in a safe condition during training to prevent accidental discharges.

## **How to Carry Handgun**

- Double Action Only: finger along frame outside the trigger guard.
- Double, Single: finger outside the trigger guard and after engaging a target the pistol should be decocked and returned to double action.
- Single Action Only: thumb safety on and finger outside trigger guard.
- Safe Action: finger outside trigger guard.

## **How to Carry Shoulder Weapon**

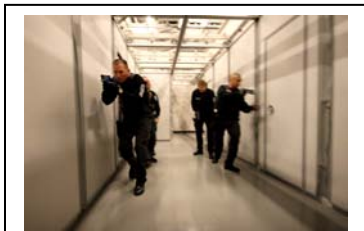
- Safety on, finger off the trigger, thumb on the selector switch.

It is further suggested that shoulder weapons remain on 'safe' until a user has a target to engage, and then weapon is returned to 'safe' after firing.

# Go Dry First

It is HUF COR's recommendation that prior to any non-lethal training, users should first go through a series of dry (empty weapons) rehearsals. This allows students to become familiar with the techniques/tactics being trained and allows the Range Safety Officer to identify and correct any safety concerns.

**Note:** When training dry, there should be no ammo anywhere in or near the structure. Range Safety Officers should thoroughly check that weapons are empty and unloaded with the use of a chamber checker. A safety chamber plug/flag should be inserted into each barrel.



Dry Rehearsal



Actual

# Qualified FlexTact Structure

## Range Safety Officer

All training must be done under the direction of a qualified shoot house Range Safety Officer(s), because tactical training is so unique. These RSOs must have a thorough knowledge of FlexTact structure operations and tactics.

The number of RSOs conducting training depends on the number of participants and the complexity of the training. Hufcor recommends a minimum of two RSOs be used; one inside on the floor level of FlexTact and one on the overhead observation level.

**A FlexTact RSO should possess the following attributes:**

- Thorough knowledge of entry tactics and techniques
- Attention to detail
- Experience in FlexTact layouts and operations
- Safety cautious with documented record
- Knowledge of muzzle movement
- High aptitude and quick thinker
- Constant alertness

The RSO should be responsible for all shoot house operations and it is recommended that he/she be the officer in charge.

**The duties and responsibilities of the FlexTact building RSO are, but not limited to:**

- Conducting safety briefing
- Inspecting structure prior to training
- Inspecting users firearms and equipment (ensure proper non-lethal cartridges and check empty weapons with chamber checkers)
- Placing targets
- Rechecking target placement
- Initiate all scenarios, and signals when they are completed (a whistle or air horn is commonly used to stop all action.)
- Placing demountable “No Shoot” graphics
- Correcting safety issues
- Conducting safe training
- Controlling the floor level and overhead observation activities

**WARNING:** There should be no lethal or reduced-lethal ammunition anywhere on site.

# Denial Barriers

Take precautions to stop unintentional entry into the FlexTact structure during training. Both signage and physical barriers should be in place to control all access points. (*See examples below.*)

**KEEP OUT  
LIVE FIRE TRAINING  
IN PROGRESS**

**EYE HAZARD AREA  
PROTECTIVE GLASSES  
MANDATORY**

Signs should be posted at eye level directly in front of access points. External doors that can be locked to prevent entry are ideal, but when not available barricades should be placed across doorways to deny entry. (Please note: barricades must not impede fire egress from the FlexTact facility.)

Entry to the catwalk or observation areas should also have signage and a denial barrier restricting access.

# Target Placement

Target placement is one of the most critical elements of safety. Targets must be placed where they can be safely engaged. Only qualified safety officers should place targets in rooms. The targets in a room can create hazardous conditions if not properly presented.

- Targets should not be placed where they impede the entry into the room.
- Targets should not be placed adjacent to or in “No Shoot Areas.”
- Targets that fall during a scenario should not be engaged.
- Targets that are passed (not initially seen) should not be shot.
- Targets should never be placed at the FlexTact panel intersections. Targets must have a solid panel back stop.



Do not place targets at panel intersections



# Training Weapons

Hufcor recommends the use of training firearms be used within the FlexTact systems. These training firearms should be clearly marked in blue or red handle colors to distinguish from live firearms. Only blanks or non-lethal cartridges (EX: Simunition®, Airsoft® or Ultimate Training Munitions –UTM) are intended for Force-on-Force training within the FlexTact system.



The use of personal firearms with training conversion kits or barrel plugs (ie. Train Safe™ devices) may be used within a FlexTact system when using the following safety procedures.

1. All live rounds and magazines must be removed from the weapon.
2. All live ammunition must be stored outside the FlexTact system (offsite or within locked storage rooms adjacent to the facility).
3. The weapon must be cleared into a bullet trap or berm.
4. The simunitions conversion kit or barrel plug must be installed per the manufacture's instructions.
5. The weapon must be inspected by a certified Range Safety Officer (RSO) prior to entry into a FlexTact facility.
6. Cleared weapons are to be checked by using a chamber checker.

# Ammunition Concerns

Only blanks or non-lethal cartridges (EX: Simunition®, Airsoft® or Ultimate Training Munitions –UTM) are to be used for Force-on-Force training within the HUF COR FlexTact structure. **Under no circumstances can lethal or reduced lethality ammunition be utilized.**

The safety regulations for all authorized cartridge manufacturers must be followed in regards to use, personal protective equipment and appropriate ventilation.

**WARNING:** At no time should lethal ammunition be utilized in the FLEXTact structure or be present at the training site.

# Diversions Devices

## Chemical Munitions, Smoke

In an effort to increase the realism associated with a tactical environment, scenarios may cause for the deployment of diversion devices (flash bang) chemical munitions and smoke. All manufacturer's rules, regulations and guidelines for the safe use of the above devices must be adhered to.

Under no circumstances can a device that propels potentially lethal fragments be utilized in the FlexTact structure.

Only hand-tossed chemical agents are authorized to be used in the FlexTact structure.

When using any munitions, proper ventilation precautions must be taken. (*Refer to manufacturers recommendations.*)

## Breakaway Windows

Theatrical breakaway glass should only be used to train "break & rake" window diversion exercises. NEVER use real tempered or annealed glass windows in a FlexTact window panel. Hufcor offers custom "smash glass" packages specifically designed for FlexTact windows. Only use the Hufcor "smash glass" windows for this type of training.

If training with breakaway windows, thoroughly clear all "smash glass" fragments away from window frame prior to conducting window entry exercises. Floors must be swept thoroughly after each "smash glass" exercise period. Window panels should not be stacked (stored) until a Range Safety Officer has inspected the window and confirmed all glass has been removed.

**WARNING:** Diversion devices (flashbangs) chemical agents and smoke are pyrotechnic devices and the potential for fire exists.

# Catwalk/Observation Safety

The catwalk provides a great vantage point for observers and instructors to view training. The control of the catwalk is governed by the RSO and at no time during live fire should anyone be permitted to be forward of the action. Everyone must stay above or behind the activity.

**WARNING:** When diversion devices are in use, remain behind the action, never above or in front of the action.

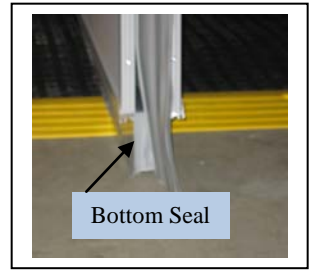


**Note:** Eye protection and ear protection should be worn while on the catwalk.

# Other Training Concerns

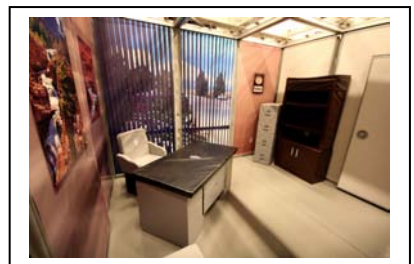
- All firearms training, by its very nature, is dangerous.
- Owners and operators of Hufcor's FlexTact system should document all users of the training and verify through signatures that each user has received read and understand the safety checklist prior to training within the FlexTact system.
- Everyone present at a training session is required to report and address any observed safety infractions.
- The HUF COR FlexTact system should be inspected for potential hazards prior to every use.
- Hufcor FlexTact panels can pose potential pinching hazards as panels are being operated and free to travel along the tracking system. Take care to not push panels together while holding the edges of the panels to avoid harm.
- Make sure that the vertical seals on each panel's edges slightly overlap with adjacent panels' sweep seals when setting up FlexTact configurations. The Hufcor vertical seal is designed to stop or greatly slow the inertia of non-lethal marker rounds and compressed air rubber pellets. Leaving a gap between the sweeps can allow a non-lethal round to travel between the panels.
- When a participant is in doubt about the safety of a shot, it should not be taken.

- Bottom seal mechanism on the FlexTact panels and pass door legs exert a minimum of 100 lbs of downward seal force to hold the panels in place. Do not put any body part or object underneath the panel when setting the seal system to avoid injury or damage to the seal mechanism.



- The use of non-functioning FlexTact panels within a training exercise is strictly prohibited. The use of broken panels could cause bodily harm or injury. Hufcor has a worldwide network of factory trained service and repair experts that can repair or replace any broken FlexTact part within a short time period. If a panel needs repair, clearly mark the panel with a large "X" using colored masking tape on both sides and store the panel for repair in the designated stacking bay.
- The door threshold and swing spaces must be kept clear of obstacles to facilitate a safe entry into the room(s).
- Training props (furniture, floor targets, defensive tactics dummy's, etc.) can be hazardous obstacles during training exercises. Place these props away from doors and entrances.

- Hufcor recommends the use of foam furnishings for use in creating 3D reality within rooms and reducing risk of injury during exercises. Hufcor can supply a complete line of Nottaline®



foam furniture for use inside FlexTact systems.

- Users should have law enforcement grade flashlights when working in low- or no-light conditions within the FlexTact system.



- Trainers and RSOs should use whistles or air horns to indicate force-on-force exercises are over, especially when training in low or no light conditions.
- Empty casings can cause a tripping hazard within the FlexTact system. Hufcor recommends sweeping the floors after each training session.

- FlexTact systems can be retrofitted into facilities that contain manhole covers. Manhole covers should be covered with no skid mats to reduce the potential tripping and movement of the cover during exercises. Hufcor can provide a no skid mat to help cover manhole covers and other floor obstacles if necessary.



- Standard Hufcor FlexTact pass doors are designed for individual breaching techniques. The use of ram breaching devices should never be used unless the pass door is clearly marked with the words, “RAM RESISTANT.” Never conduct an individual/personal breach on a pass door marked “RAM RESISTANT”. The forces needed to breach the door could cause bodily injury.

# No Shoot Rules

- No shooting behind doors located on the perimeter of the FlexTact system layout. The open space between the door and the door frame may allow a projectile to escape. Consider these areas “No Shoot.” Doors located on the interior tracks are intended to be used for force-on-force exchanges.
- No shooting beyond another person. If another person is directly in front of you or forward off to the side, it would be unsafe to shoot.
- No shooting unauthorized ammunition (only non-lethal cartridges allowed.)
- No shooting over or under another participant.
- No shooting in “out of bounds” areas.
- No shooting unsafe shots.
- No shooting after scenario ends.

**WARNING:** Failure to follow safety guidelines may result in serious injury or death.

# Terms & Definitions

**Angle of Deflection** – The direction or angle at which splatter bounces off a hard surface.

**Back Splatter** – Splatter/fragments that return to the shooter.

**Blank** – A cartridge which has no projectile, but makes a loud report when fired.

**Cat Walk** – A walkway or balcony extending above the structure or above an individual room that provides a vantage point to observe training. Common catwalks run down the middle of the house. The catwalk flooring can be solid or slatted.

**Escaped Round** – Any expended round or fragment that manages to leave the shoothouse.

**Force on Force Training** – When one or more persons are actively engaged in shooting at one another with non-lethal ammunition.

**HUFCOR FlexTact Structure** – Tactical training moveable wall system.

**Method of Entry** – A particular tactic or technique used to enter a room in training.

**Muzzle Awareness** – Being constantly cognizant of where your muzzle is pointing.

**Muzzle Discipline** – Never allowing a muzzle to point in an unsafe direction.

**Non-lethal Cartridge** – Ammunition designed for Force on Force training.

**No Shoot Areas** – Out of bounds areas where shooting in that direction is prohibited. Areas are often identified with a certain paint color and/or wording “No Shoot.”

**Out of Bounds** – “No Shoot Areas” or other locations in the structure where shooting is prohibited.

**Paint Round** – A non-lethal (marking) cartridge with a paint-filled projectile used for Force on Force training.

**Personal Protective Equipment** – Required equipment worn in training, such as, eye protection, ear protection, throat protection, groin protection and face protection.

**Ricochet** – A projectile, or portion of a projectile, that glances or skips off of a surface upon impact.

**RSO; Range Safety Officer** – The person(s) responsible for the safe training of participants in a HUF COR FlexTact structure.

**Splatter** - Fragments created when the projectile strikes a hard surface.

**Stand-Off Distance** – The distance between a shooter and the structure, target or another trainee.

# Summary

## Remember the Following:

- Do use FlexTact to its fullest designed intent.
  - Do wear approved protective equipment as outlined.
  - Do use only qualified trainers/instructors
  - Do follow all safety rules
  - Do exercise good judgment.
  - Do use safe tactics and techniques.
  - Do establish policies and directives governing the use of your FlexTact structure.
  - Do know students and product limitations.
  - Do follow all product manufacturers' safety guidelines.
- 
- Don't deviate from the safety manual.
  - Don't violate safe stand-off distances.
  - Don't train without a qualified safety officer.
  - Don't use products for other than intended purposes.
  - Don't train beyond the ability of the student/user.
  - **NEVER BRING/USE LETHAL AMMUNITION INTO THE FLEXTACT STRUCTURE.**